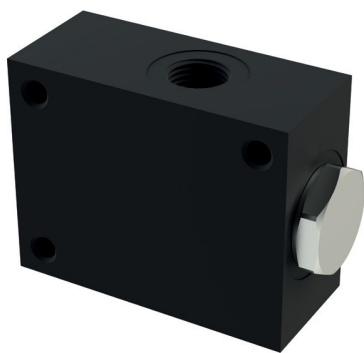
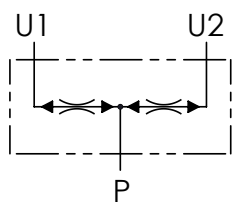


DRF VALVOLE DIVISORI/RIUNIFICATORI DI FLUSSO
FLOW DIVIDER/COMBINER VALVES



SCHEMA IDRAULICO / HYDRAULIC CIRCUIT



CODICE ORDINAZIONE
ORDERING CODE

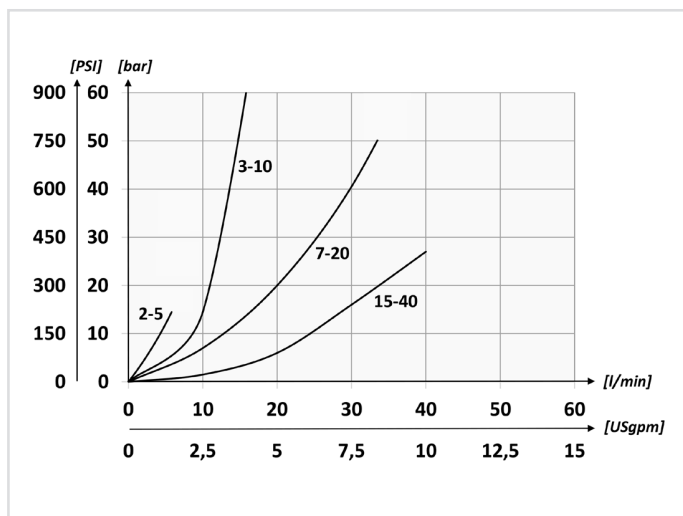
01	02	03	04
DRF10			

01	VALVOLA DIVISORE/RIUNIFICATORE DI FLUSSO (FLOW DIVIDER/COMBINER VALVES)		DRF10
02	CAMPO DI PORTATA IN INGRESSO (L/MIN) INLET FLOW RANGE (USGPM)	2-5 (0.5-1.3)	1
		3-10 (0.8-2.6)	2
		7-20 (1.8-5.2)	3
		15-40 (3.9-10.4)	4
03	CONNESSIONE P (PORT P)	BSPP 3/8	380
		BSPP 1/2	120
04	CONNESSIONE U1/U2 (PORT U1/U2)	BSPP 3/8	380
		BSPP 1/2	120

DATI TECNICI / TECHNICAL DATA

Olio idraulico - Mineral oil	ISO 6743/4 (DIN 51524)
Viscosità olio - Oil viscosity	15-250 mm ² /s (15 to 250 cSt)
Classe di contaminazione max Max contamination index	ISO 4406:1999 Classe 19/17/14
Temperatura dell'olio - Oil temperature	-20°C +80°C -4°F +176°F
Temperatura ambiente - Environment temperature	-20°C +50°C -4°F +122°F
È indispensabile l'utilizzo di un filtro per proteggere la valvola (filtrazione consigliata 15 µm) It is necessary a filter use to protect the valve (advised filtration 15 µm)	

PERFORMANCE



CARATTERISTICHE TECNICHE / TECHNICAL CHARACTERISTICS

TIPO TYPE	PORTATA MAX MAX FLOW l/min-USgpm	PRESSIONE MAX MAX PRESSURE bar-PSI	PESO APPROX APPROX WEIGHT kg-lbt
DRF10	40 (10.6)	250 (3625)	0,52 (1.14)

